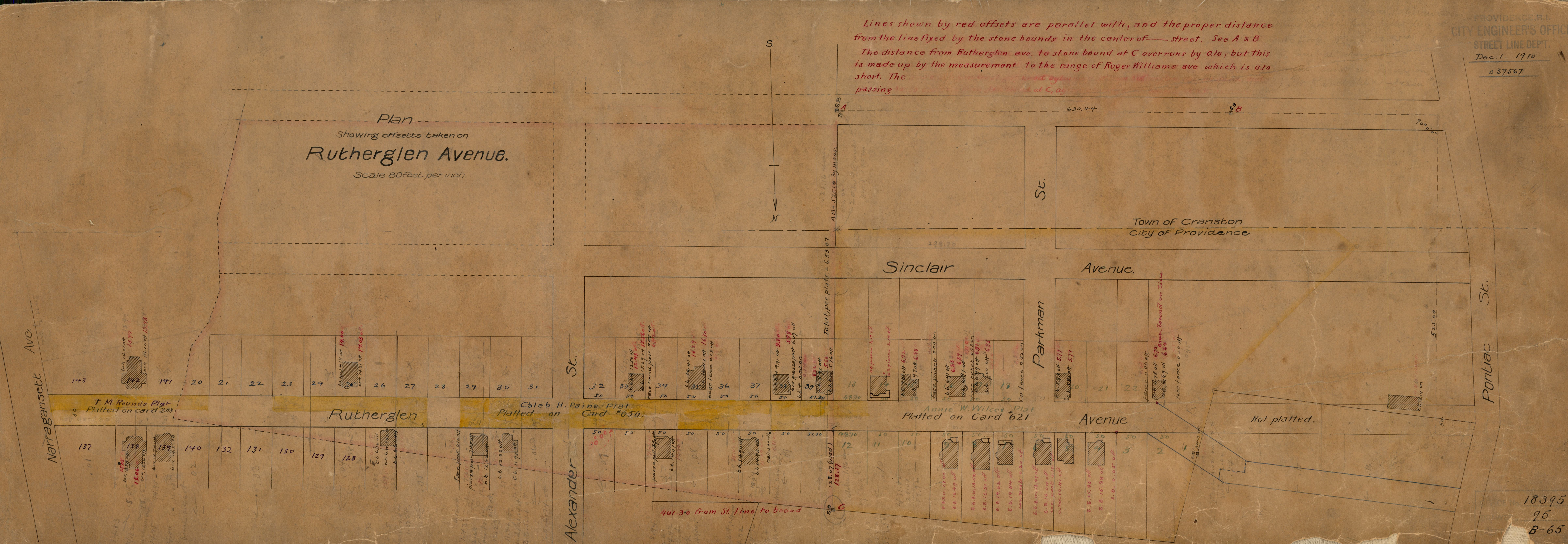
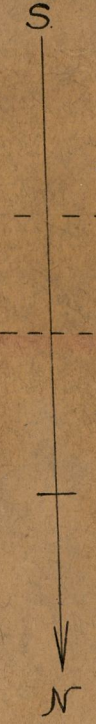


Lines shown by red offsets are parallel with, and the proper distance from the line fixed by the stone bounds in the center of street. See A x B  
 The distance from Rutherglen ave. to stone bound at C overruns by 0.10, but this is made up by the measurement to the range of Roger Williams ave which is 0.10 short. The passing line at C, as shown, is correct.

Plan  
 Showing offsets taken on  
**Rutherglen Avenue.**  
 Scale 80 feet per inch.



AB = 525.10 by meas.  
 Total, per plats = 653.07

T. M. Rounds Plat  
 Platted on card 203

Caleb H. Paine Plat  
 Platted on Card #656

Annie W. Wilcox Plat  
 Platted on Card 621

401.30 from St. line to bound

18395  
 95  
 B-65